

From CraNE 1 to CraNE2

The establishment of EU Network of CCCs

Per Magnus Mæhle

Oslo University Hospital CCC

Joint Action EU Net CCC

EU



Flagship 5. EU network of Comprehensive Cancer Centres



The goal is to:

- achieve **higher-quality care** and **reduce inequalities** by providing **diagnosis and treatment close to home**;
- ensure that **90% of eligible patients** have access to such centres by 2030.

✓ Joint Action launched November 2022 (JA CraNE)

[2023 EU4Health Work Programme call](#)

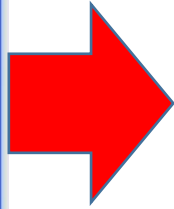


European
Commission



Europe's Beating Cancer Plan

Communication from the
commission to the European
Parliament and the Council



Crane

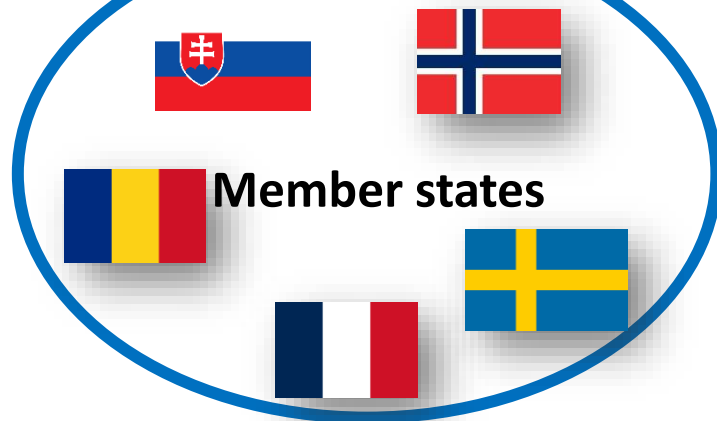


EU Net CCC

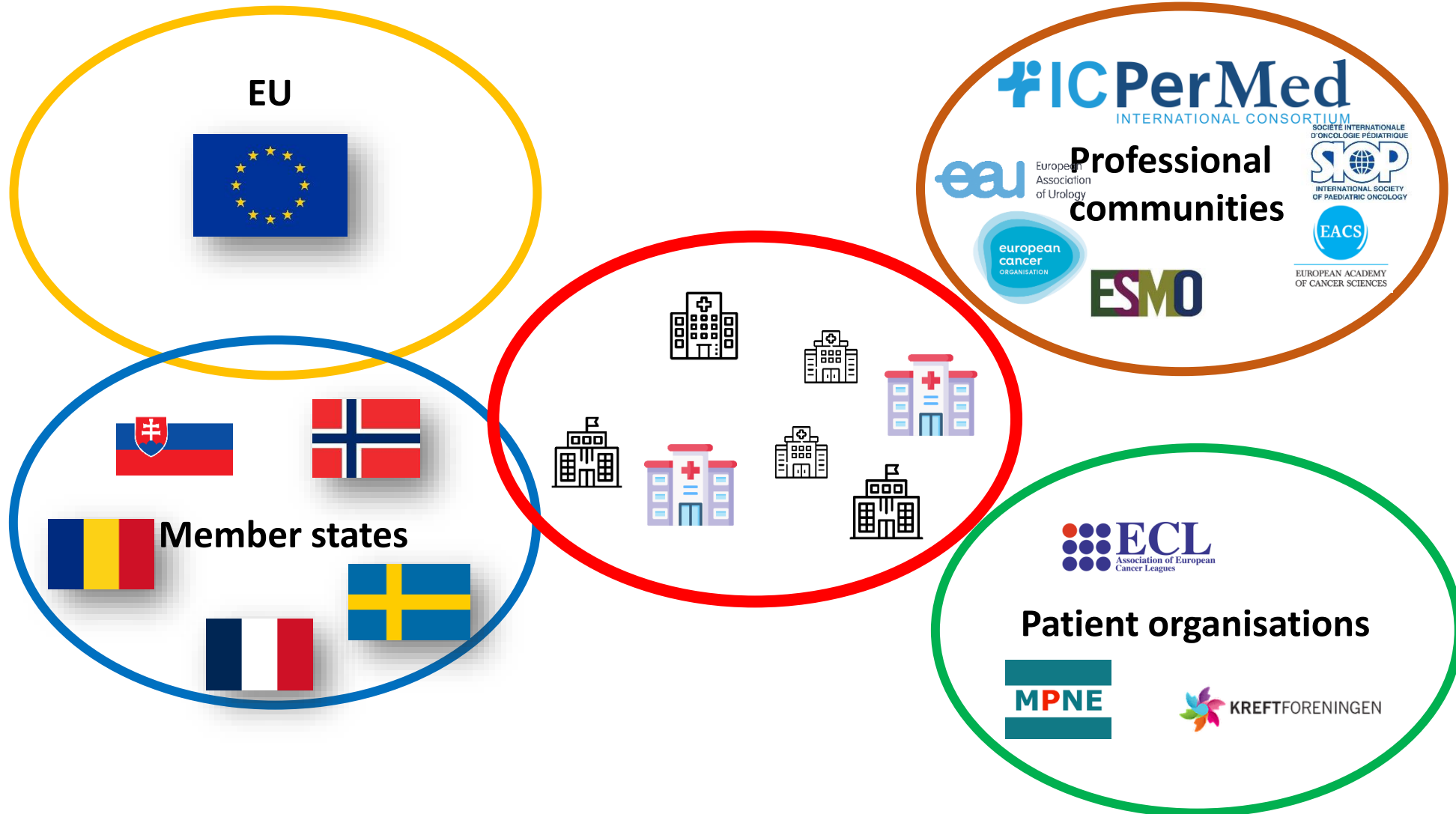
The historical possibility – the interaction between three core interests and actors



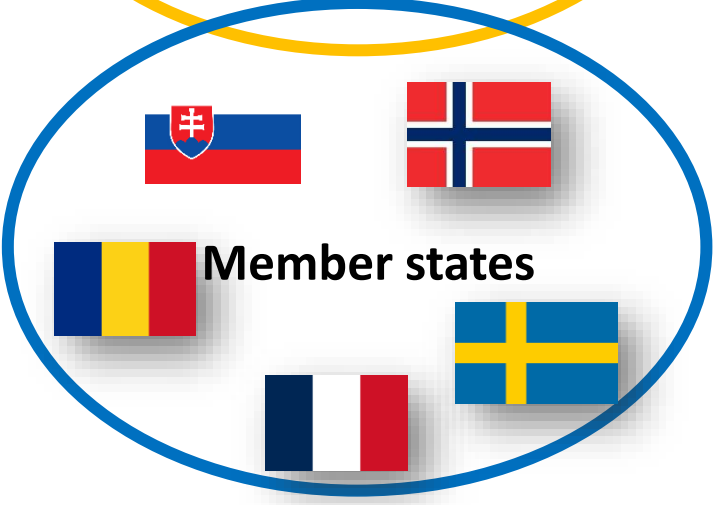
Political authorities



The historical possibility – the interaction between core interests and actors



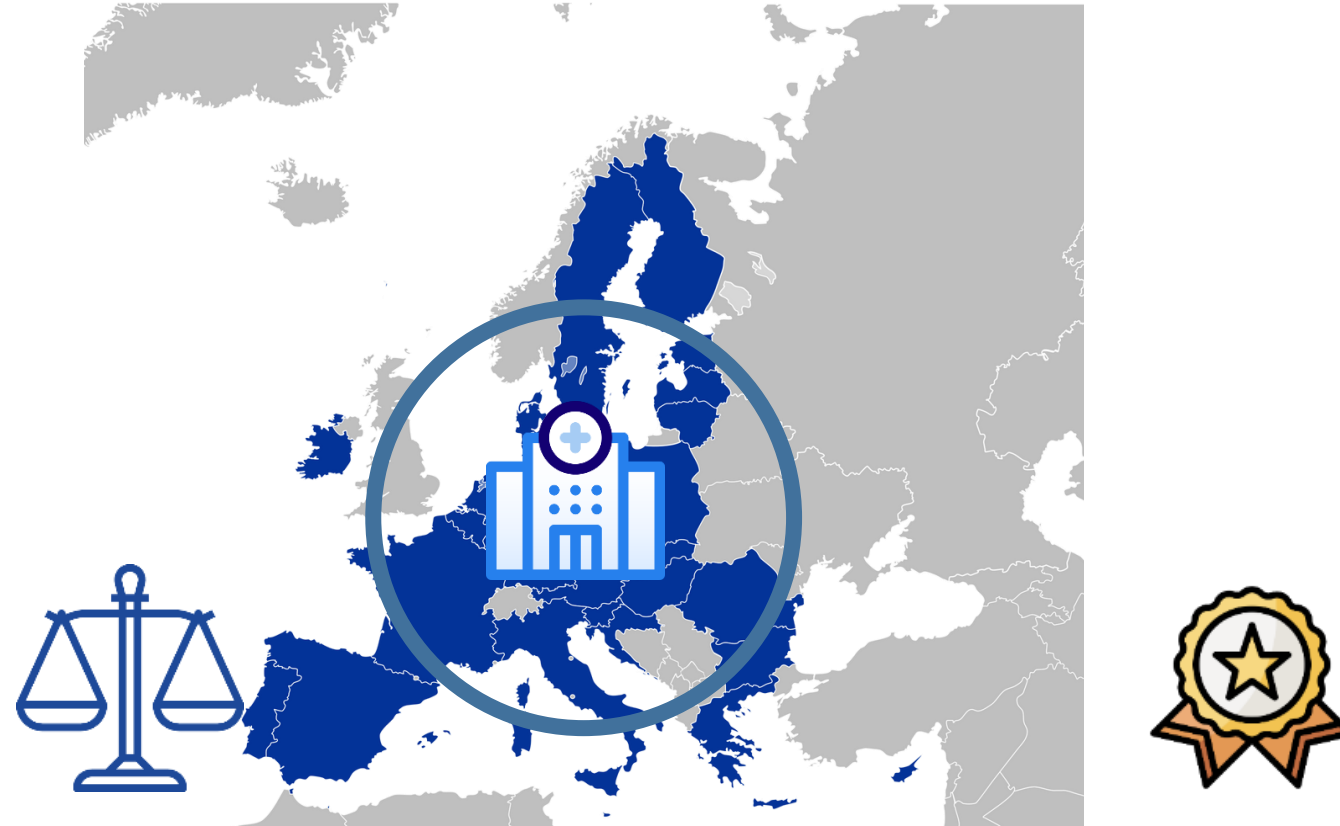
Strong political motivation



The strategic role of the CCC concept



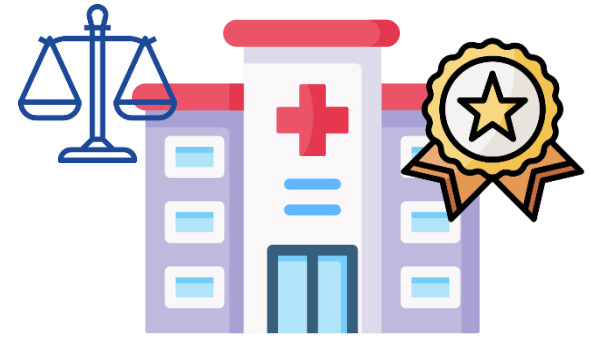
Geographical obligations for patients



The motives behind certification processes



Driven by technical regulation of Markets



Certification assessment system

The motives behind certification processes



**Driven by technical
regulation of Markets**




**Driven by
academic inspirations**



**Certification
assessment
system**

Overview deliverable WP7 of CraNE

 CraNE__European_Network_of_Comprehensive_Cancer_Centres


**Set of Criteria and Standards for
EU Comprehensive Cancer Centres**

Author(s): Lead author: Name Surname
Co-authors: Name Surname, Name Surname

Contributor(s):

Work Package: WP7

Date: 23.04.2024

 Co-funded by the European Union

CraNE Joint Action is funded by the European Union. Views and opinions expressed are however those of the author(s) only and do not necessarily reflect those of the European Union or European Health and Digital Executive Agency (HDDEA). Neither the European Union nor the granting authority can be held responsible for them. The authors are not responsible for any further and future use of the report by third parties and third-party translations.


Page 1 of 74

STANDARDS

6 (7) DIMENSIONS

**Research
Innovation
Prevention
Integration Research & Care
Education and Training
Governance
(Care)**

Overview deliverable WP7 of CraNE

 CraNE_European_Network_of_Comprehensive_Cancer_Centres


**Set of Criteria and Standards for
EU Comprehensive Cancer Centres**

Author(s): Lead author: Name Surname
Co-authors: Name Surname, Name Surname

Contributor(s):

Work Package: WP7

Date: 23.04.2024

 Co-funded by the European Union


CraNE Joint Action is funded by the European Union. Views and opinions expressed are however those of the author(s) only and do not necessarily reflect those of the European Union or European Health and Digital Executive Agency (HDDEA). Neither the European Union nor the granting authority can be held responsible for them. The authors are not responsible for any further and future use of the report by third parties and third-party translations.

Page 1 of 74

6 (7) DIMENSIONS

**Research
Innovation
Prevention
Integration Research & Care
Education and Training
Governance
(Care)**

Overview deliverable WP7 of CraNE

 CraNE European Network of Comprehensive Cancer Centres


**Set of Criteria and Standards for
*EU Comprehensive Cancer Centres***

Author(s): Lead author: Name Surname
Co-authors: Name Surname, Name Surname

Contributor(s):

Work Package: WP7

Date: 23.04.2024


 Co-funded by the European Union

CraNE Joint Action is funded by the European Union. Views and opinions expressed are however those of the author(s) only and do not necessarily reflect those of the European Union or European Health and Digital Executive Agency (HDDEA). Neither the European Union nor the granting authority can be held responsible for them. The authors are not responsible for any further and future use of the report by third parties and third party translations.

Page 1 of 74

STANDARDS



 CraNE European Network of Comprehensive Cancer Centres


**Set of Additional Information for
*EU Comprehensive Cancer Centres***

Author(s): Lead author: Name Surname
Co-authors: Name Surname, Name Surname

Contributor(s):

Work Package: WP7


Date: 23.05.2024

 Co-funded by the European Union

CraNE Joint Action is funded by the European Union. Views and opinions expressed are however those of the author(s) only and do not necessarily reflect those of the European Union or European Health and Digital Executive Agency (HDDEA). Neither the European Union nor the granting authority can be held responsible for them. The authors are not responsible for any further and future use of the report by third parties and third party translations.

**ADDITIONAL
INFORMATION**



 CraNE European Network of Comprehensive Cancer Centres

**Supporting document for
*EU Comprehensive Cancer Centres***


Description on Evidence
Proposal on Scoring
Glossary

Author(s): Lead author: Name Surname
Co-authors: Name Surname, Name Surname

Contributor(s):

Work Package: WP7


Date: 23.05.2024

 Co-funded by the European Union

CraNE Joint Action is funded by the European Union. Views and opinions expressed are however those of the author(s) only and do not necessarily reflect those of the European Union or European Health and Digital Executive Agency (HDDEA). Neither the European Union nor the granting authority can be held responsible for them. The authors are not responsible for any further and future use of the report by third parties and third party translations.

**SUPPORTING
DOCUMENT**



 CraNE European Network of Comprehensive Cancer Centres


**Proposal on Certification Process for
*EU Comprehensive Cancer Centres***

Author(s): Lead author: Name Surname
Co-authors: Name Surname, Name Surname

Contributor(s):

Work Package: WP7

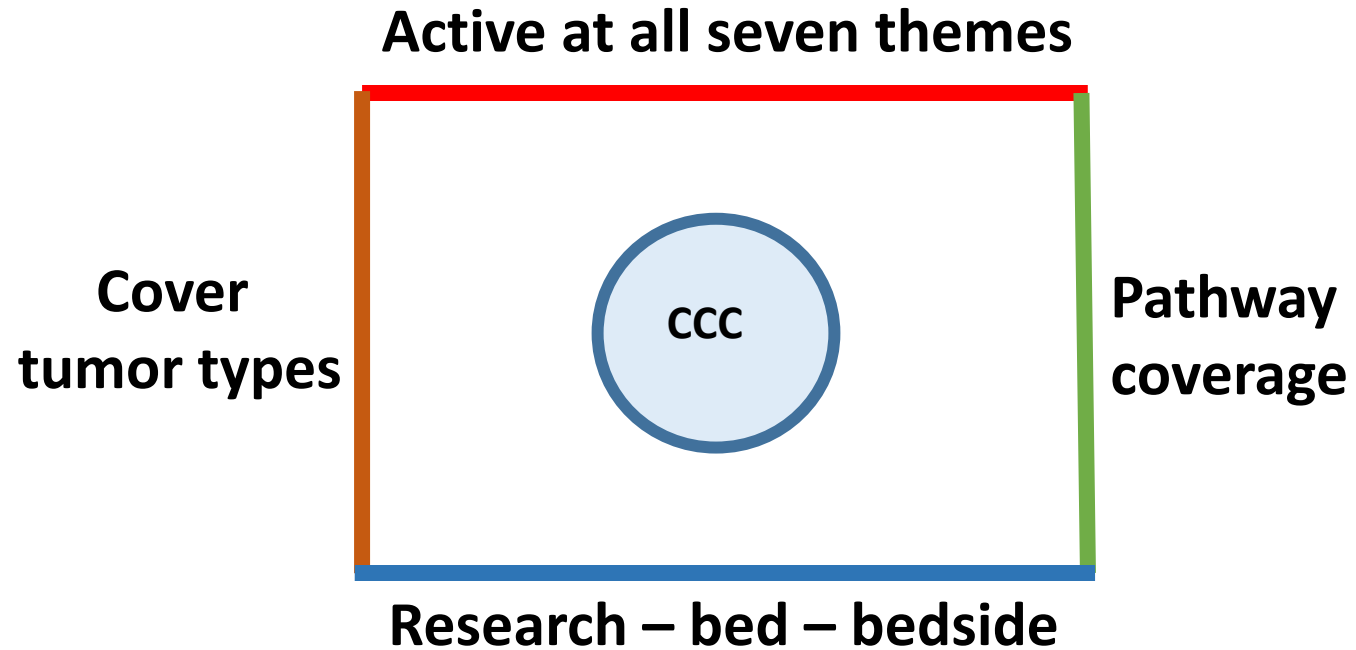
Date: 23.05.2024

 Co-funded by the European Union

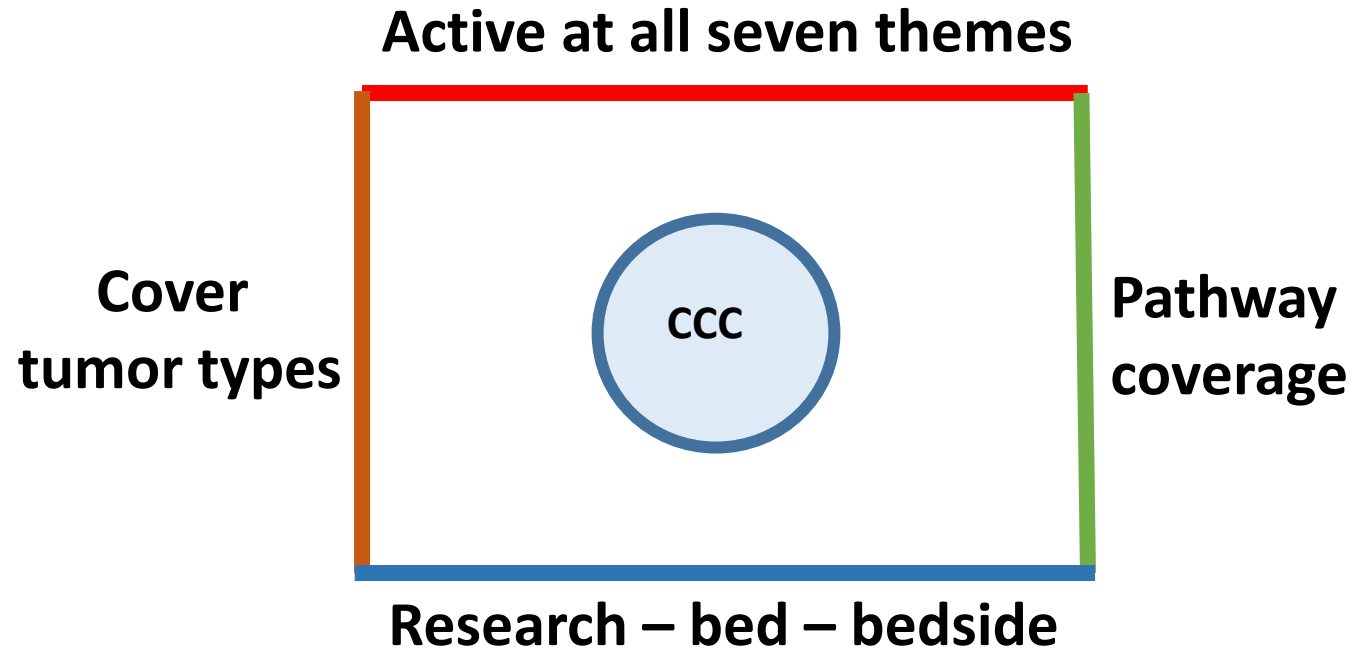
CraNE Joint Action is funded by the European Union. Views and opinions expressed are however those of the author(s) only and do not necessarily reflect those of the European Union or European Health and Digital Executive Agency (HDDEA). Neither the European Union nor the granting authority can be held responsible for them. The authors are not responsible for any further and future use of the report by third parties and third party translations.

**PROPOSAL ON
PROCESS**

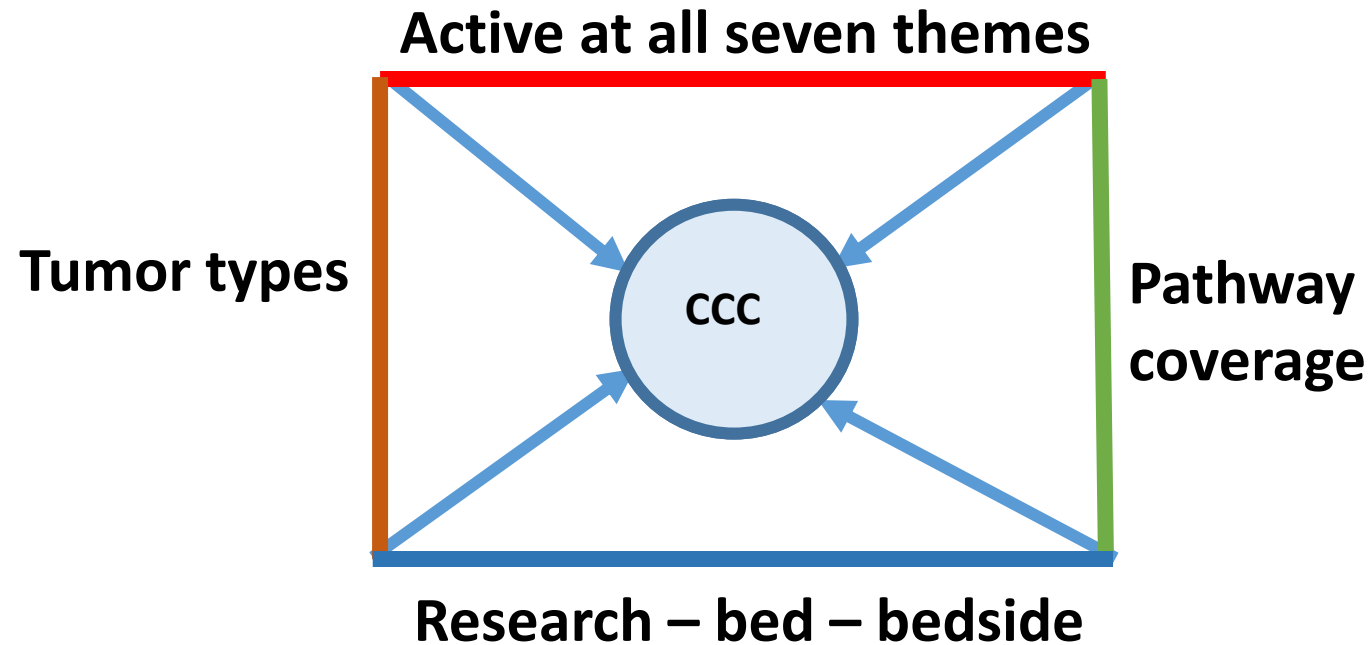
The four dimensions of comprehensiveness



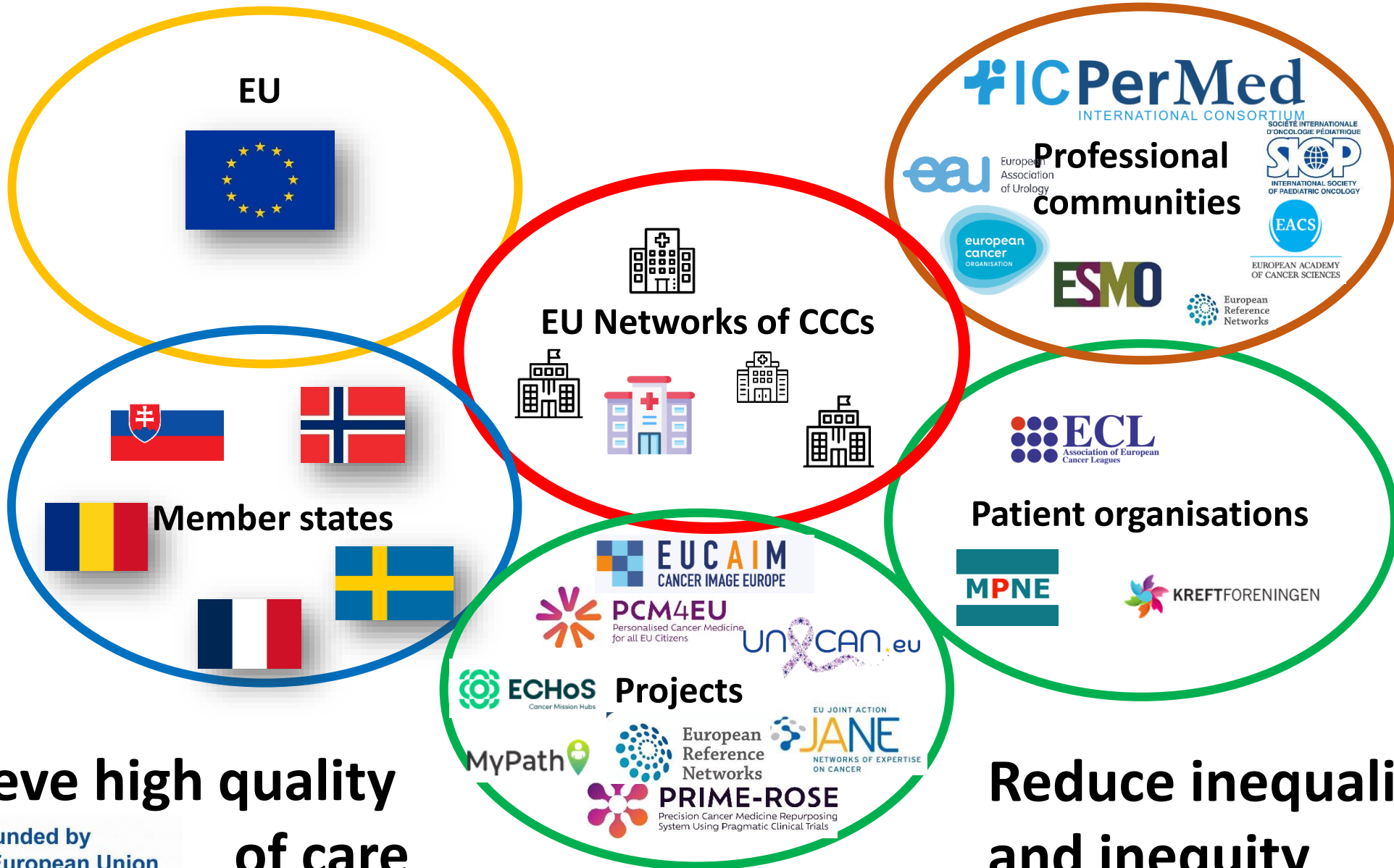
The four dimensions of comprehensiveness



Coordinating the four dimensions of comprehensiveness



The key-role of the **CCCs and their networks** to reach the targets

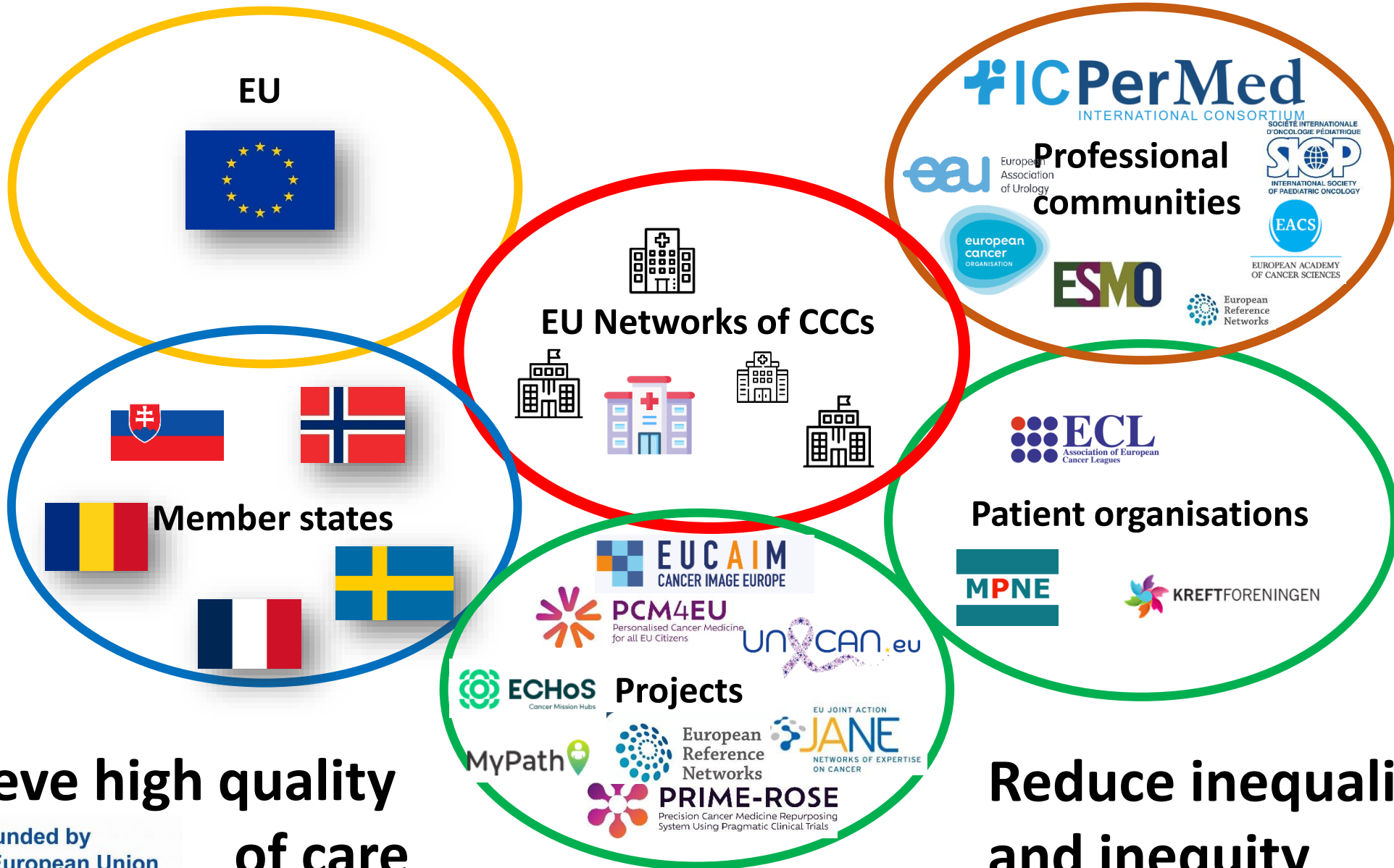


Achieve high quality of care



Reduce inequalities and inequity

The key-role of the **CCCs and their networks** to reach the targets

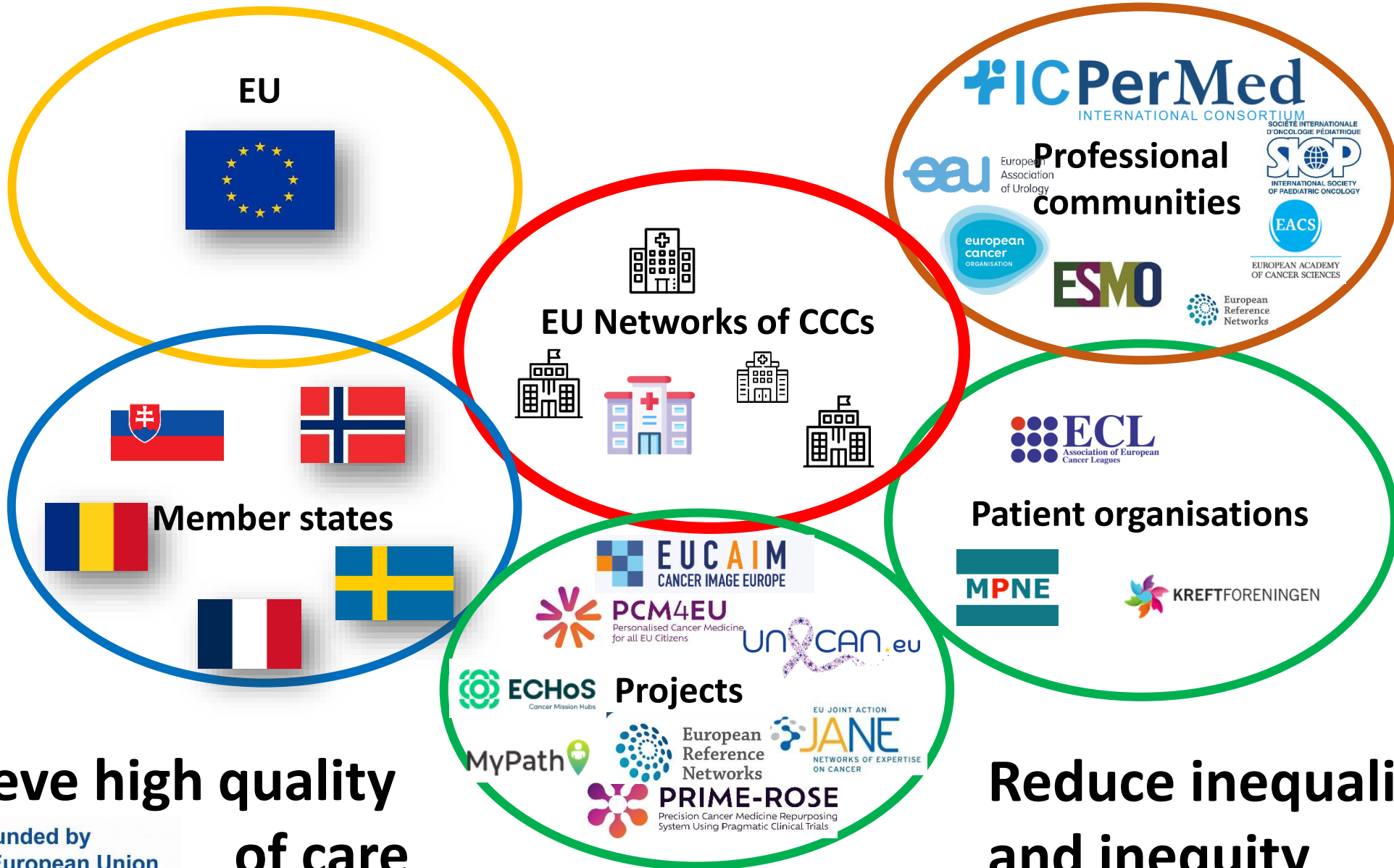


Achieve high quality of care



Reduce inequalities and inequity

The key-role of the **CCCs and their networks** to reach the targets

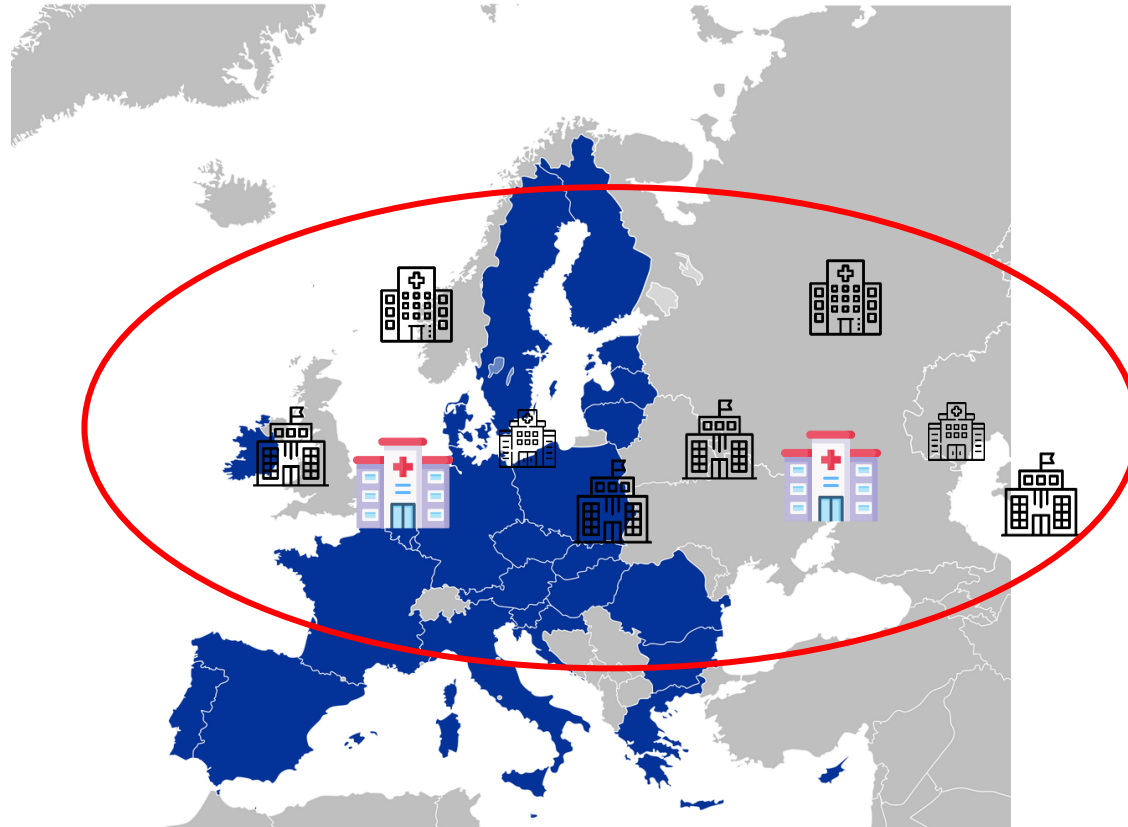


Achieve high quality of care

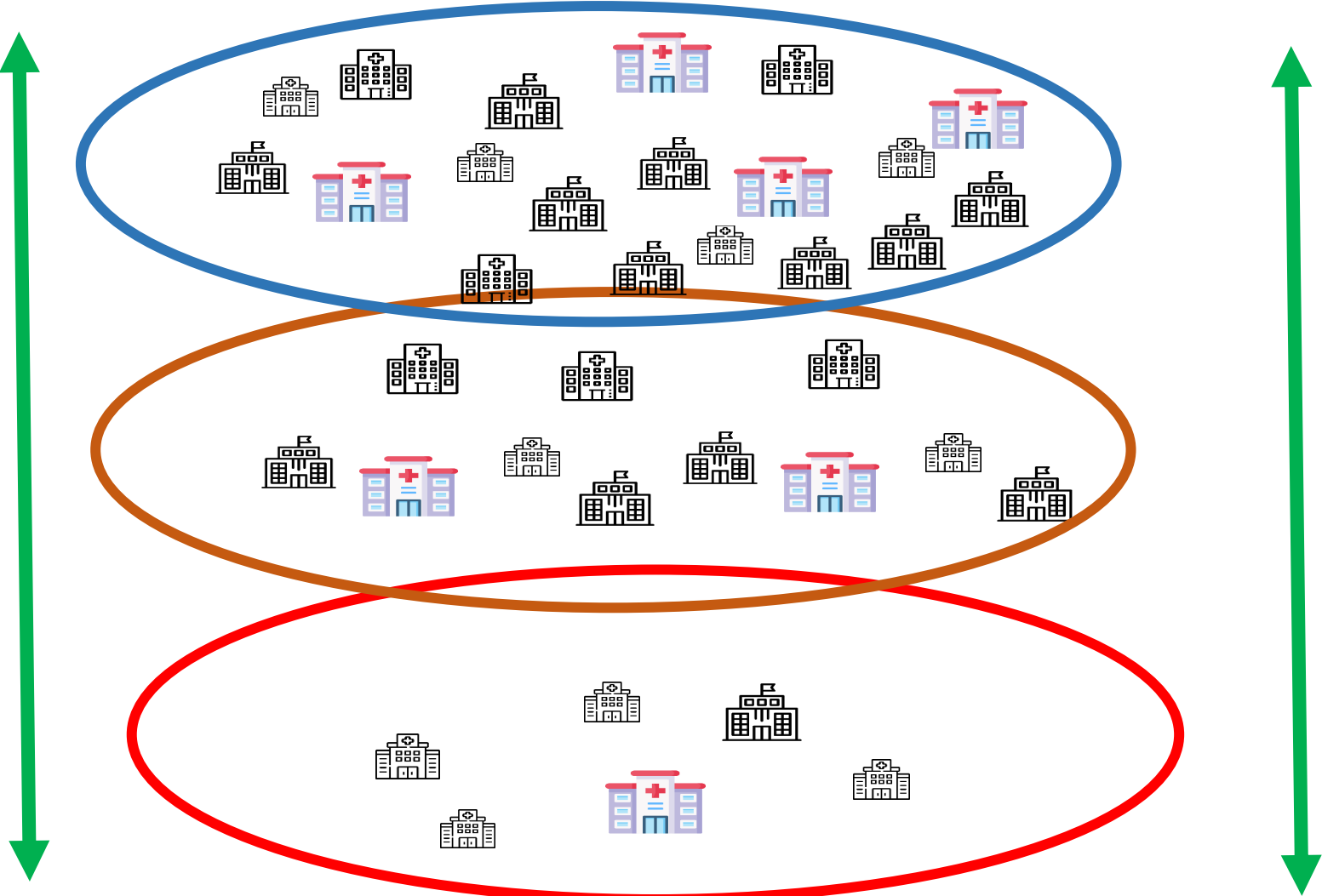


Reduce inequalities and inequity

|



A network of networks



A network for development and synergies



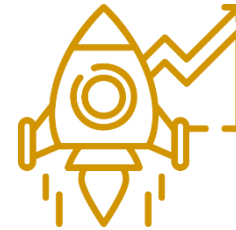
**Support and capacity programs
(WP6 EU Net CCC)**



A network for development and synergies



**Support and capacity programs
(WP6 EU Net CCC)**

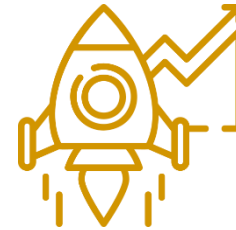


**Piloting projects
(WP4 EU Net CCC)**

A network for development and synergies



**Support and capacity programs
(WP6 EU Net CCC)**

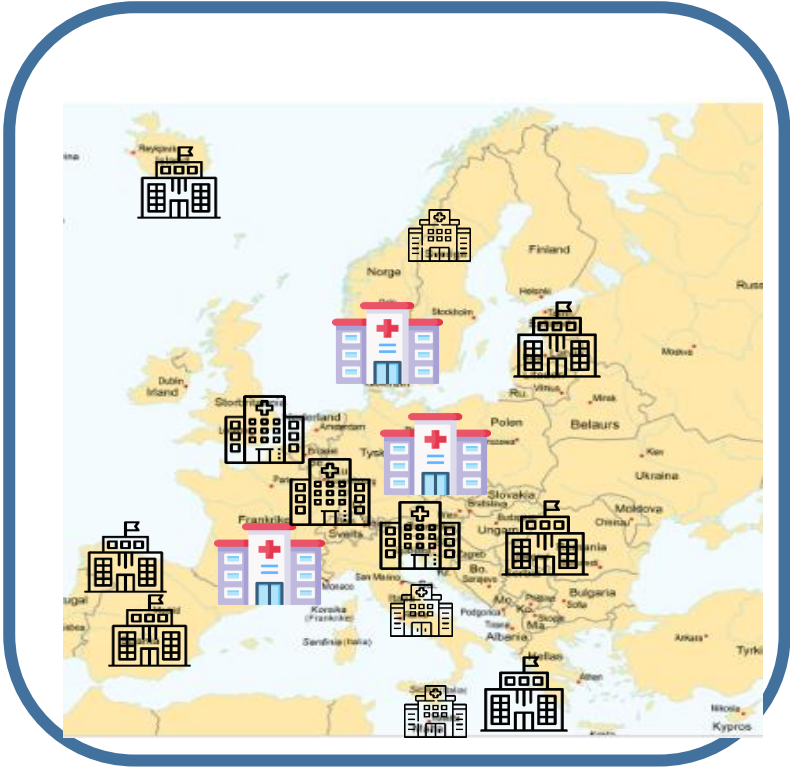


**Piloting projects
(WP4 EU Net CCC)**



**Joint network activities
WP8 EU Net CCC**

The network activities of the CCC Network



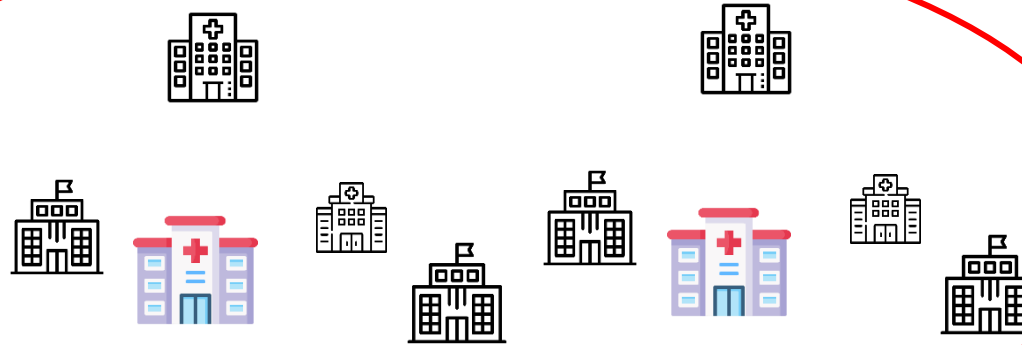
WP8 Activities, interactions and small-scale implementation

Task 8.1

Establishing the Network's Collaborative Framework and Toolkit

Task 8.3

Dissemination of solutions implemented, and shared learning from experiences.



Task 8.2.1
Disseminating and implementing guidelines

Task 8.2.2
Accelerating cancer prevention

Task 8.2.3
Unlocking Cancer Research collaborations and synergies

Task 8.2.4
Precision Cancer Diagnostics, including MTB and liquid biopsies

Task 8.2.5
Clinical data for research and quality monitoring

Task 8.2.6
Advancing clinical trials

Task 8.2.7
Accelerating cancer survivorship care

Task 8.2.8
Improving Governance and organisation

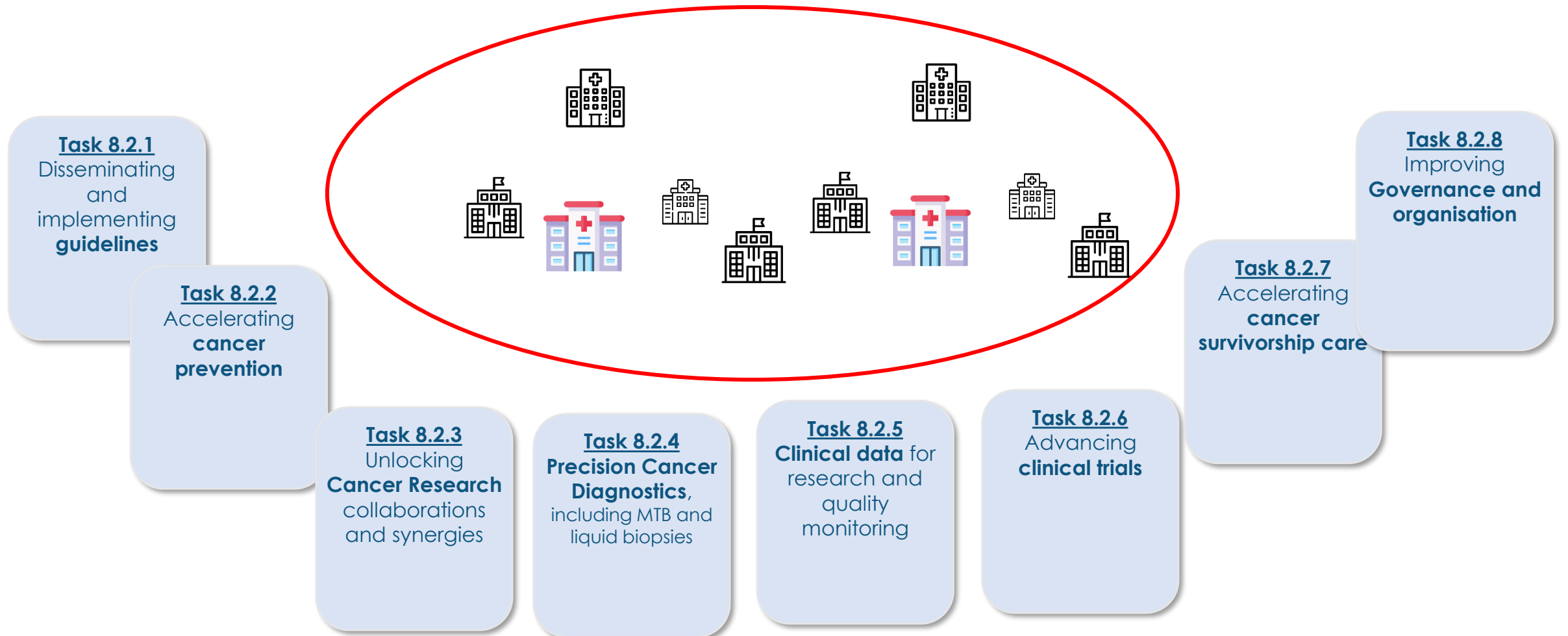
WP8 Activities, interactions and small-scale implementation

Task 8.1

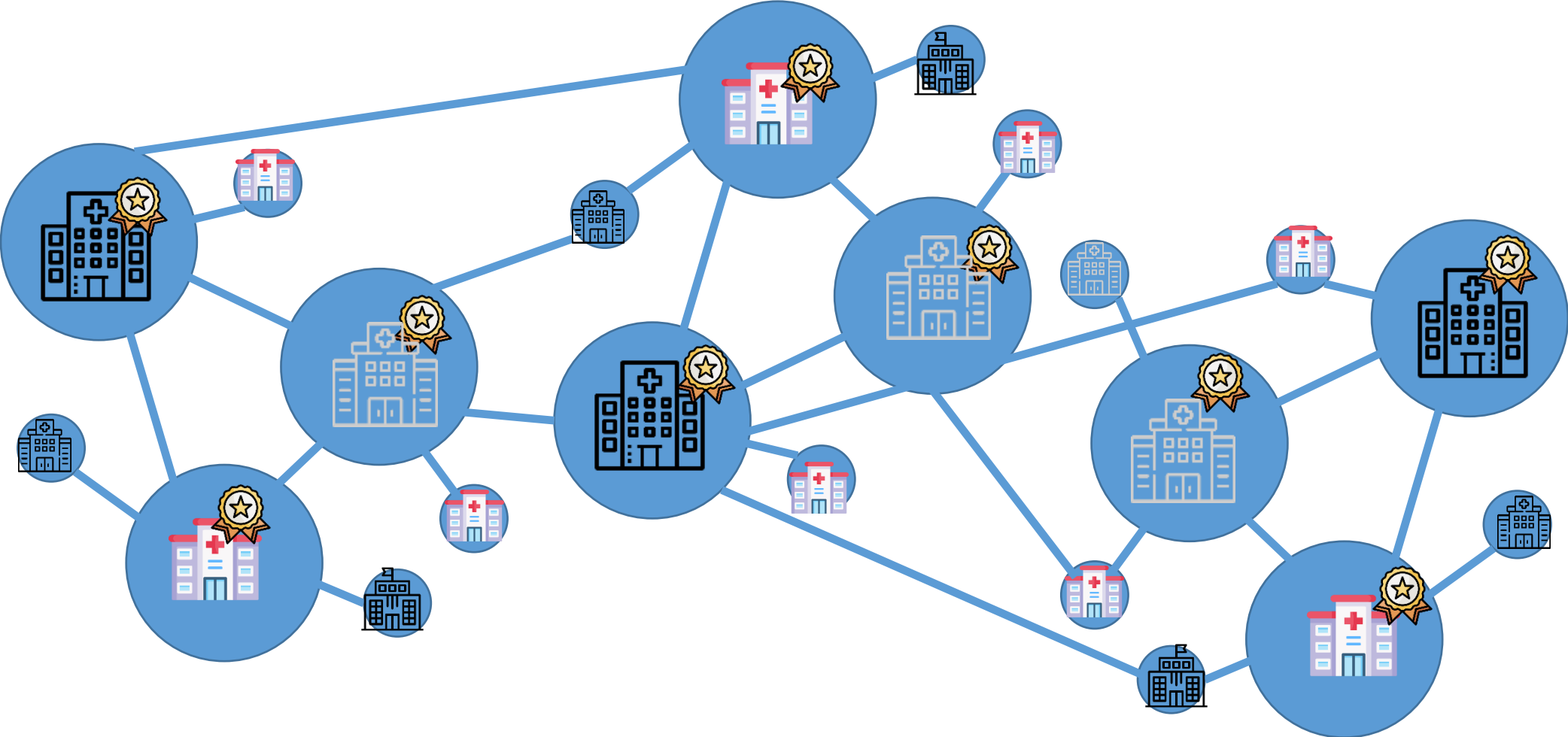
Establishing the Network's Collaborative Framework and Toolkit

Task 8.3

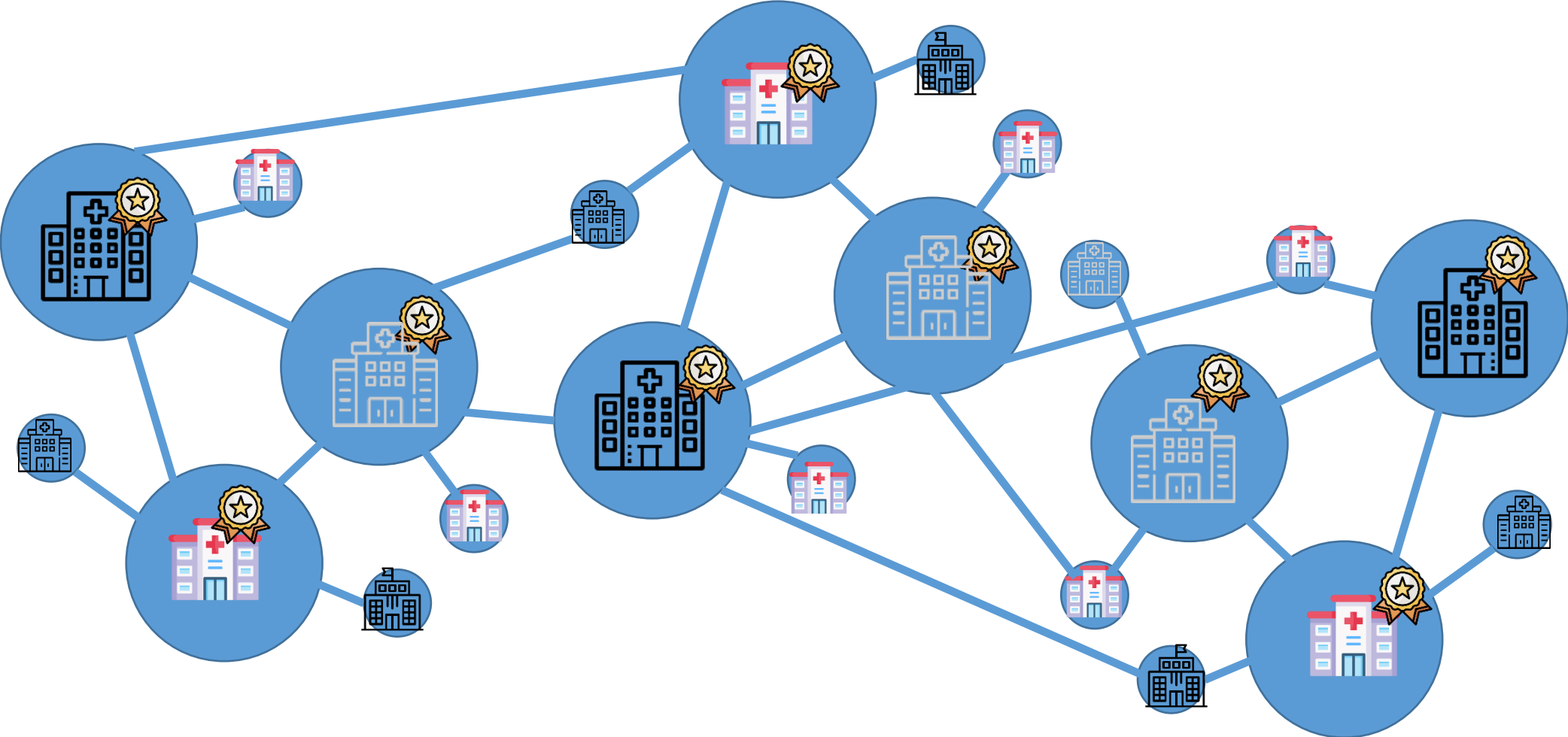
Dissemination of solutions implemented, and shared learning from experiences.



The Joint action project and the EU Network organization



The Joint action project and the EU Network organization



OEI – EU Net CCC

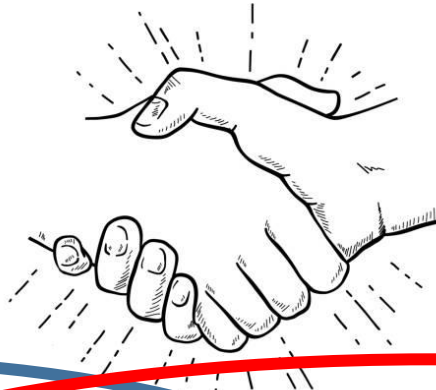
The members of OEI



The CraNE and
EU Net CCC partners



OECI – EU Net CCC – joint ambitions ongoing dialogue



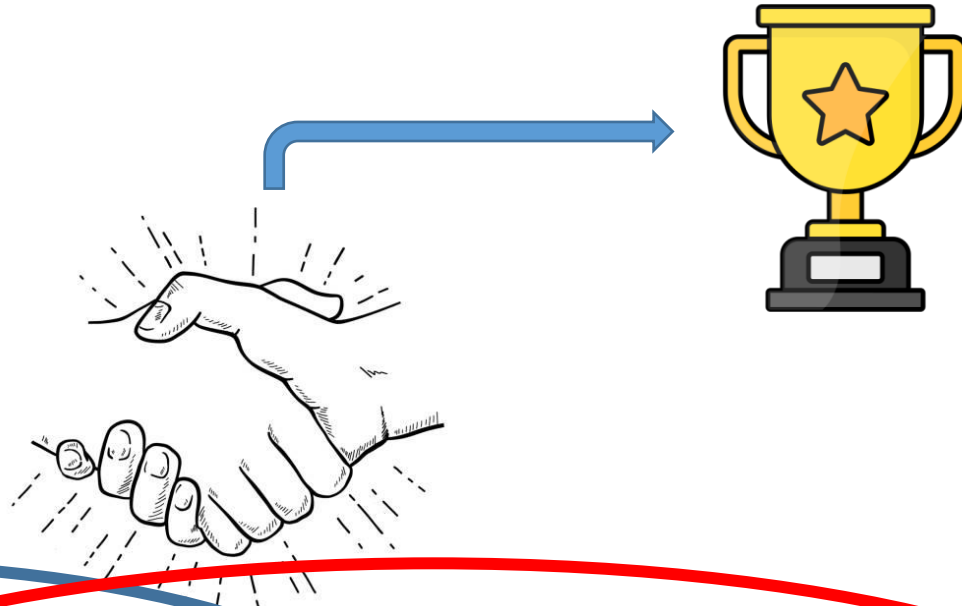
The members of OECI



The CraNE and
EU Net CCC partners



OECI – EU Net CCC –
joint ambitions
ongoing dialogue



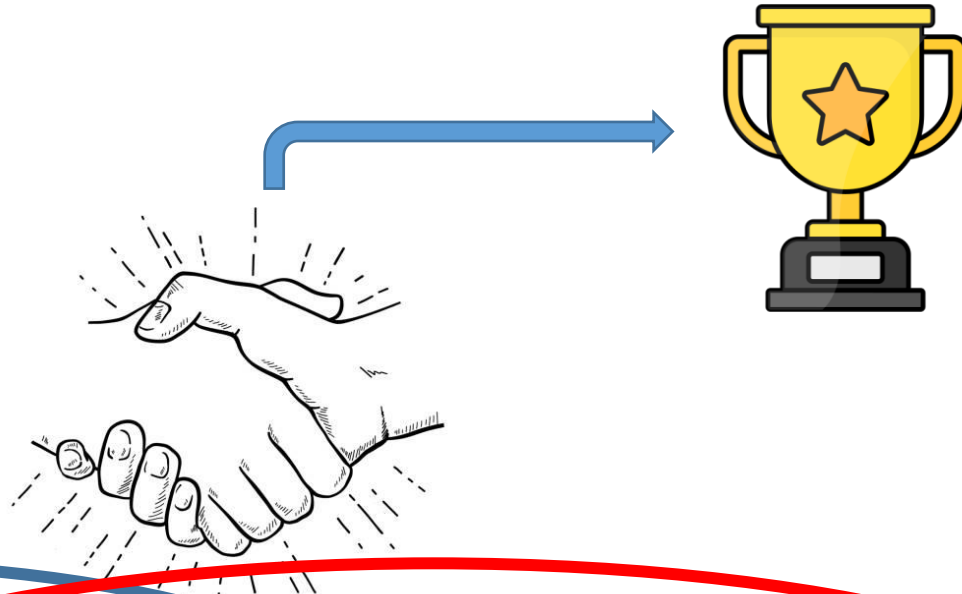
The members of OECI



The CraNE and
EU Net CCC partners



OECI – EU Net CCC –
joint ambitions
ongoing dialogue



The members of OECI



The CraNE and
EU Net CCC partners



Thank you for your attention